

USACE Regional Sediment Management Program (RSM)

Linda Lillycrop

Program Manager, RSM Program
USACE IOOS Program Liaison

USACE-AOOS Workshop
Coordinating Coastal and Ocean Monitoring

10 August 2010



US Army Corps of Engineers
BUILDING STRONG®



Regional Sediment Management is...



... A systems-based approach for collaboratively addressing sediment-related issues within a regional context (coastal and watershed)

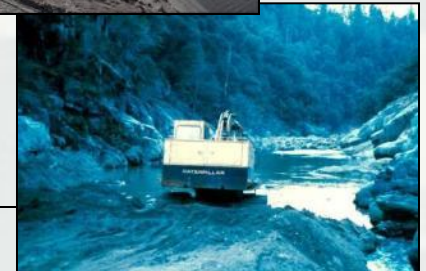


RSM Operating Principles

- Recognize sediment as a resource
- Evaluate use of
- Balanced, economic, sustainable solns
- Consider regional
- Monitor to evaluate environmental, social impacts
- Apply technical understanding system
- Coordinate/Communicate with stakeholders, leverage resources



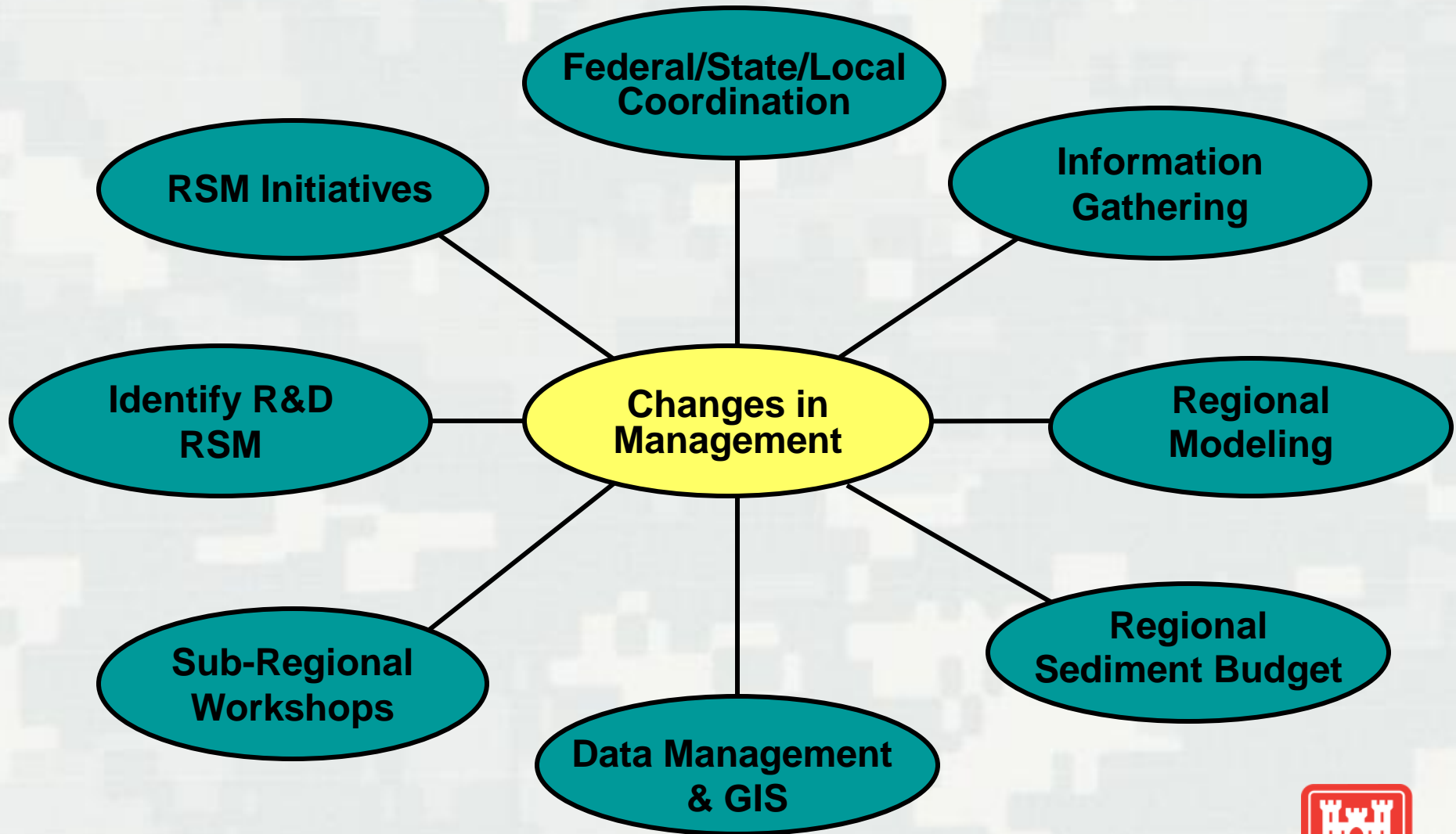
Federal, State, Local, Academia, Others.....



RSM Across the USACE



Activities



Process

Preliminary Sediment Budget

ID Gaps in Knowledge

Develop Plan to Improve Knowledge

Tools

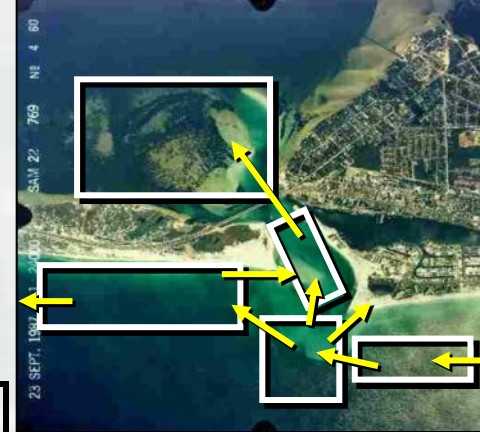
Models

GIS

Field Data

Refine Regional Sediment Budget

Engineering Solutions



BUILDING STRONG®

Sediment Budget Requirements

Data

- Mapping
- Hydrodynamic/Meteorological
- Volumes/Sediment Characteristics

Models

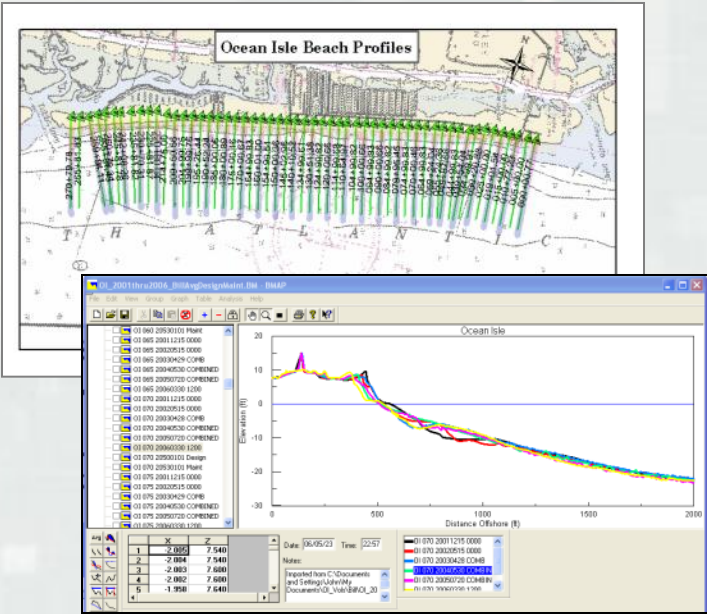
- Waves (offshore/nearshore)
- Water-Levels
- Currents/Circulation Patterns
- Shoreline Change
- Sediment Transport

Tools

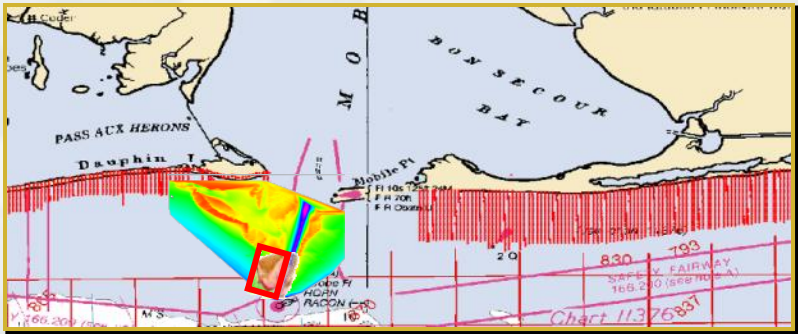
- Data Management
- GIS



Mapping Data - Bathymetry/Topography/Shoreline/Imagery Regional/Long-Term/Post-Storm



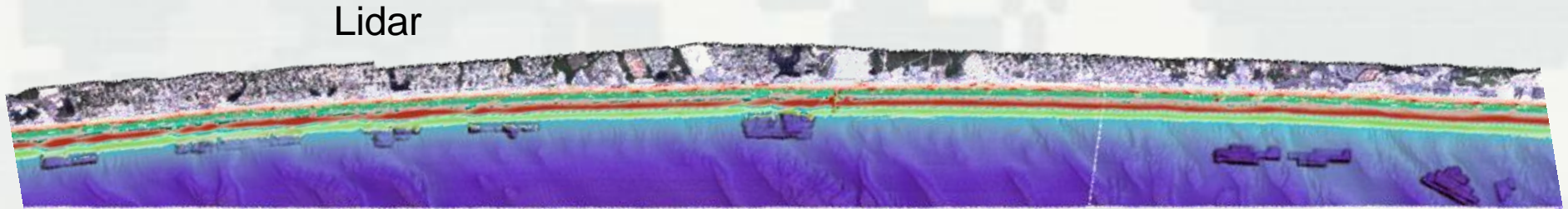
Beach Profiles



Multibeam



Shorelines



Lidar

Mapping Data - Bathymetry/Topography/Shoreline/Imagery *Regional/Long-Term/Post-Storm*

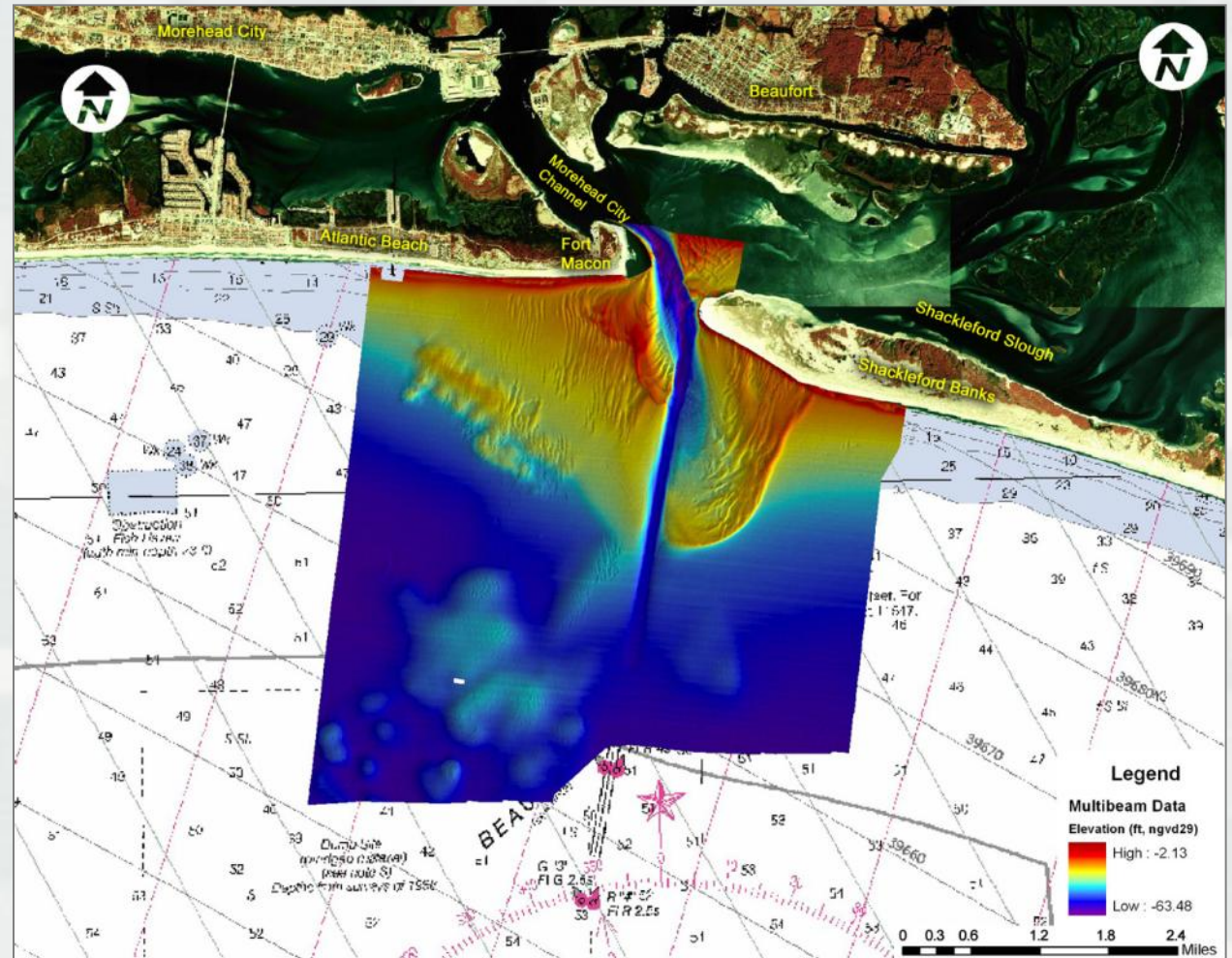
Aerial Photography



BUILDING STRONG®

Mapping Data - Inlet Morphology

- Volumetric Analyses



Mapping Data - Inlet Morphology

- Shoreline and Channel Changes



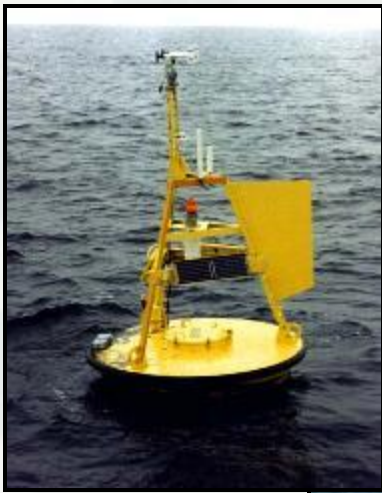
Hydrodynamic/Meteorological Data (Offshore and Nearshore)

Waves (offshore/nearshore)

Water-Levels

Currents/Circulation Patterns

Winds, Barometric Pressure



NDBC
CDIP
ERDC/CHL



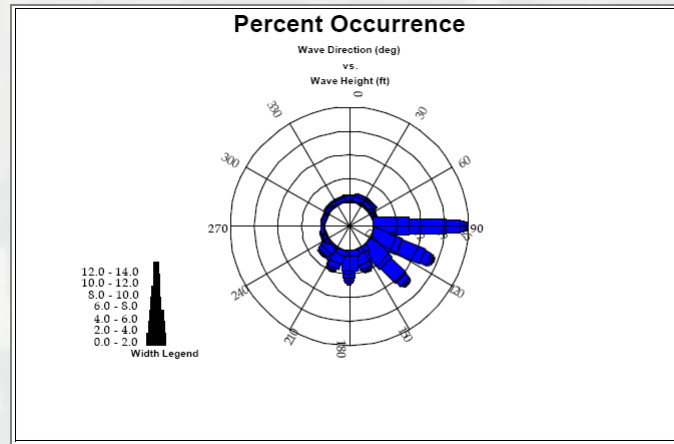
NDBC-CMAN, Airports



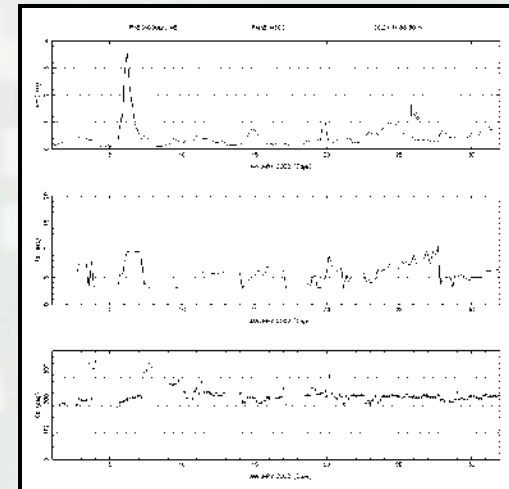
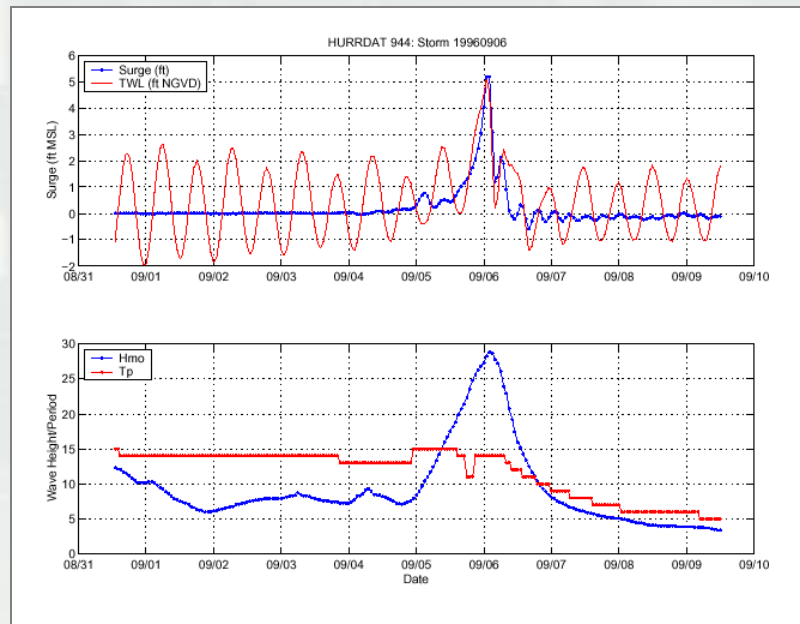
ADCP
Bottom Mounted
Vessel Transects



Hydrodynamic/Meteorological Data (Offshore and Nearshore)



Wave Information Study (WIS)

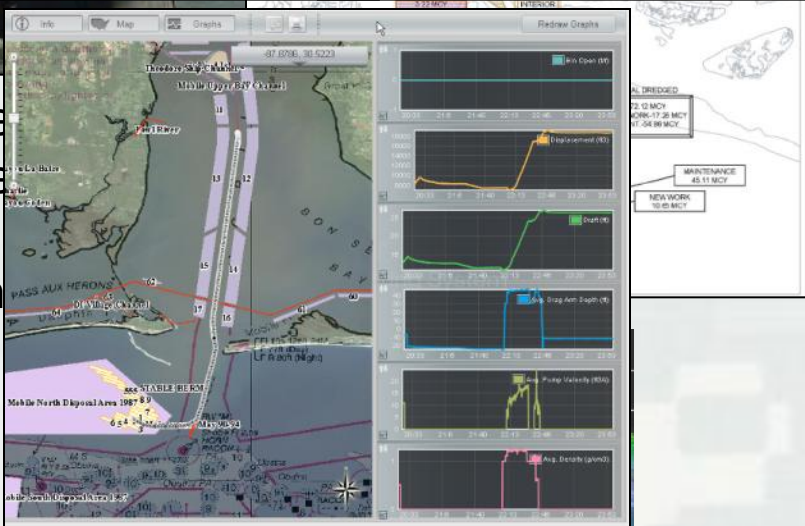


BUILDING STRONG®

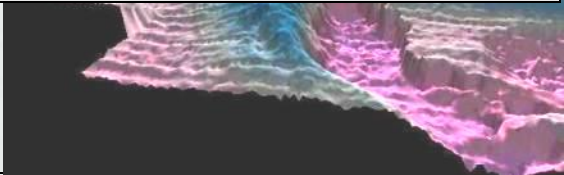
Volumes/Sediment Characteristics

- Historical Dredging Data
- Surveys
- Sediment Sampling

Silent Inspector
Dredge Monitoring



- Where
- Where
- When
- Volume



Shoaling Patterns/Dispersion

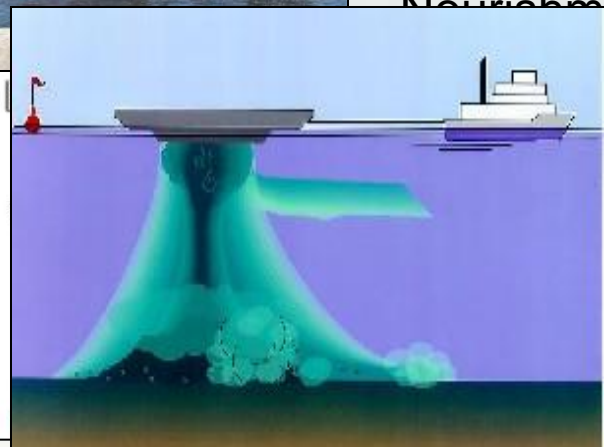
FATE Models

STFATE (Short Term)

MDFATE (Multiple Disposal)

LT-FATE (Long Term)

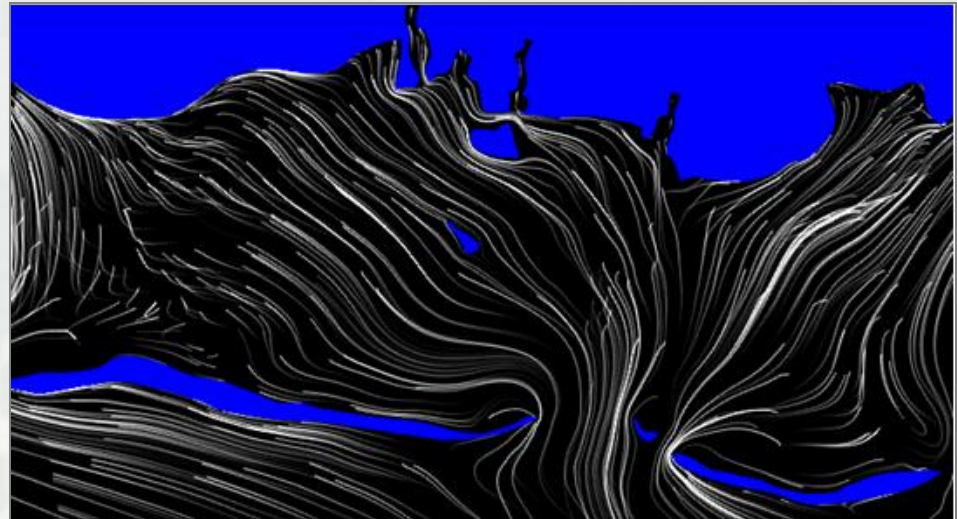
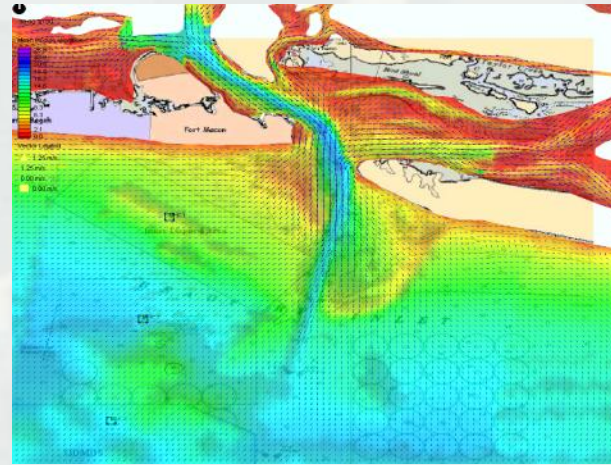
Beach Nourishment



Sediment Characteristics

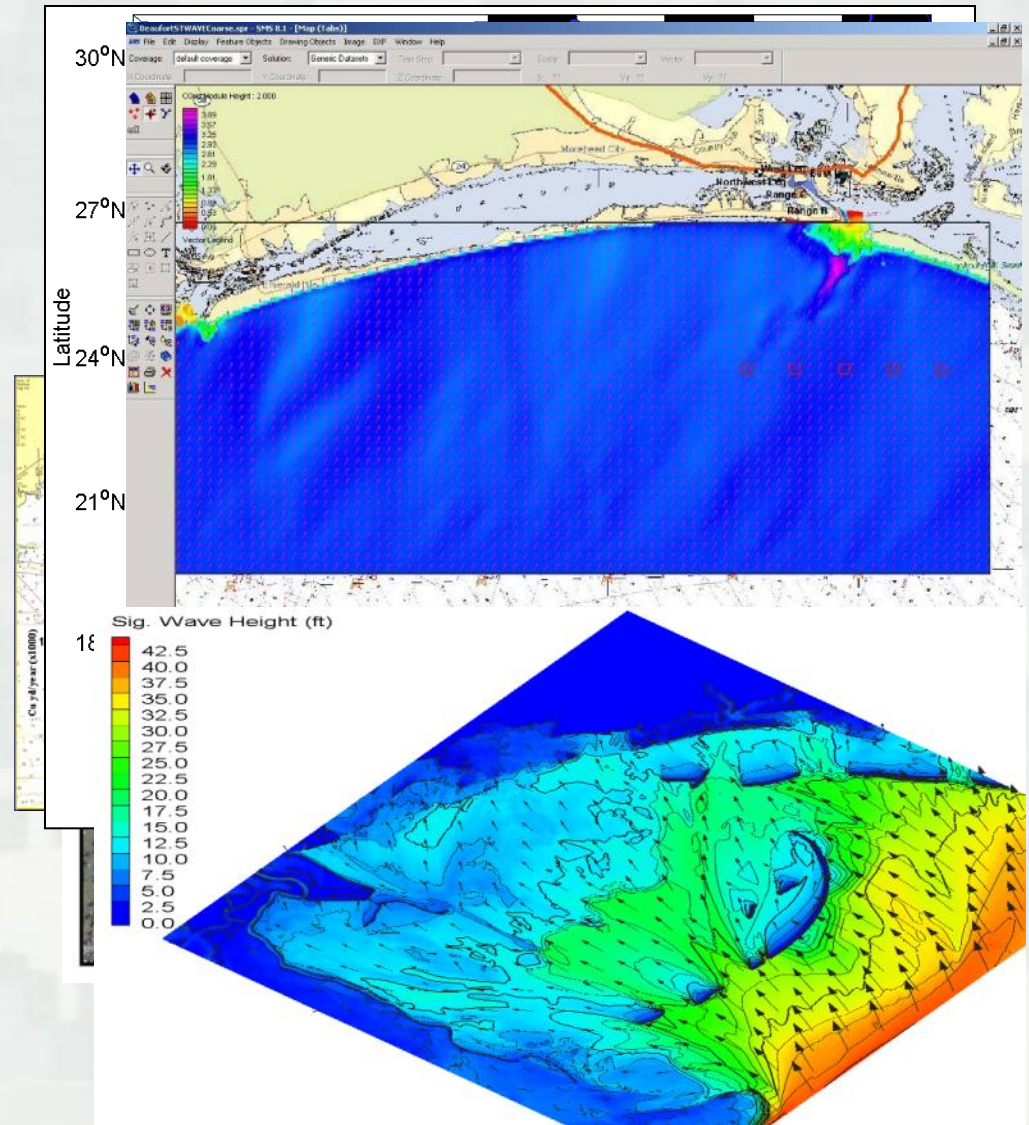
Coastal Processes Models

- Currents/Circulation
Water Levels



Coastal Processes Models

- Waves Basin Scale
- Wave Transformation
- Longshore Transport
- Inlet Transport Patterns



Coastal Process Models (Sediment Budgets)

Model	Waves OS	Wave Trans	Currents	Water Levels	Sediment Transport	Shoreline Change	Cross-shore Change	Patterns Pathways
WISWAVE	x							
WAM	x							
WAVEWATCH	X							
STWAVE		x						
CGWAVE		x						
SWAN		x						
Boussinesq		x						
GENESIS					x	x		
CASCADE					x	x	x	x
SBEACH							x	
ADCIRC			x	x				x
CMS-2D			x	x	x			x
Mike21		x	x	x	x	x		x
Delft3D		x	x	x	x	x		x
MORPHOS		x	x	x	x	x		
Particle Tracking								x



Data Management and GIS

GIS/NCDB/Data Framework



BUILDING STRONG®

Thank You

Regional Sediment Management

Regional Knowledge

multiple sediment sources
and sinks

Multiple, interacting
coastal projects

Morphologic Features
and Pathways

