

Marine Subsistence Mapping

Maryann Fidel

Aleut International Association

April 16, 2014



Two projects of relevance to STAMP

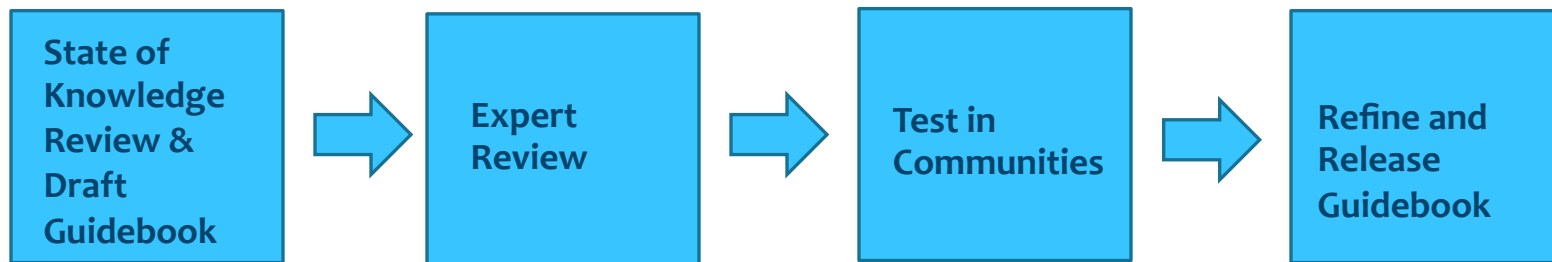
- * Marine Subsistence Use Mapping: Tools for Communities
- * Results from BSSN (Bering Sea Sub Network) Community-Based Mapping effort, from which stemmed the new project CONAS (Community Observation Network for Adaptation and Security)

Marine Subsistence Use Mapping: Tools for Communities

- * Response to AMSA 2009 recommendations II(a & c): Survey of Indigenous marine use areas, identify areas of ecological and cultural significance
- * Follow-up report 2013 'Identification of Arctic marine areas of heightened ecological and cultural significance'
- * while cultural legacy is clear the details are lacking

Marine Subsistence Use Mapping: Tools for Communities

- * GOAL: To produce a tool which makes use of established techniques and open source software that will allow coastal Indigenous communities to produce their own scientifically justifiable maps of marine subsistence use.

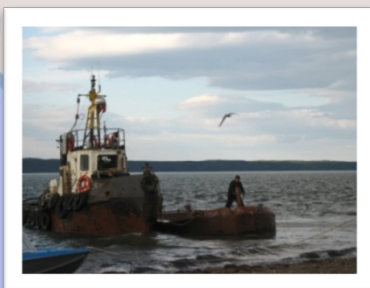


BSSN/CONAS: Community based research and monitoring effort



CHUKOTKA

ALASKA



●
Kanchalan

● ●
Gambell

Savoonga



KORYAK

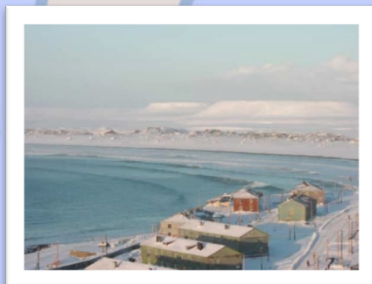
●
Tymlat



●
Togiak

KAMCHATKA

●
Nikolskoye



●
St. George



●
Sand Point

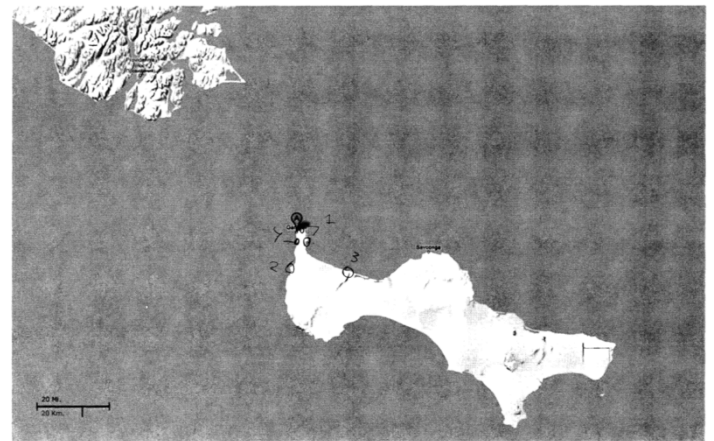


Subsistence Spatial Data

- * Currently data from a four year survey effort involving 802 respondents and over 6,000 surveys are being processed
- * Over a 4 year period asked people what marine/rivers areas they used to harvest certain species in the previous 6 month period
- * Same respondent pool of 'high harvesters'



Gambell



Subsistence Spatial Data

- * Goal was to create scientifically justifiable maps of harvest use areas
- * Have begun a partnership with AOOS to incorporate subsistence use spatial data



Tool for...

* Detecting change

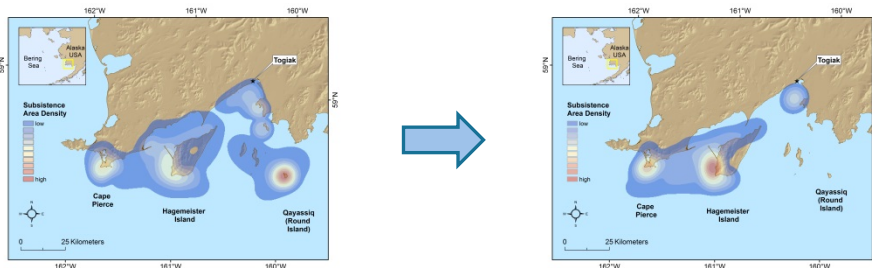
- * unusual environmental change – physical and biological
- * How subsistence activities respond to change (adapt), assess effects to well being

* Integrating information

- * Conflicting uses
- * Assess effects of increased development subsistence
- * Assess effects of environmental change
- * Planning

* Communities

- * Can create custom maps of their use, for their purposes, empowerment



Questions?