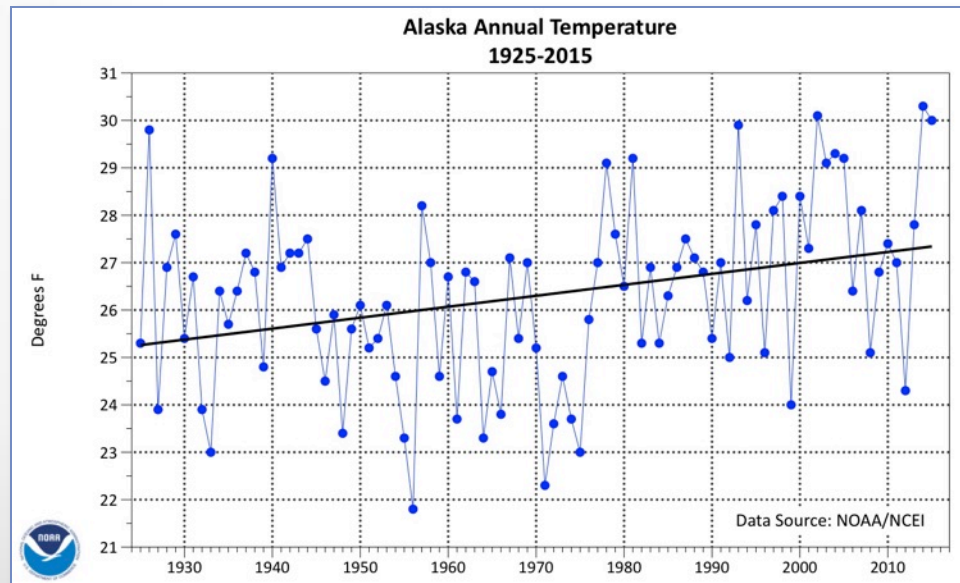


National Weather Service Alaska Region

- Alaska's weather, climate and related environmental changes are happening now and having profound effect on Alaska's people, land and sea.
- Changes in the seasonality and extent of sea ice is dramatically impacting the state
- Temperatures are rising twice as fast as the Lower 48
 - Earlier snow melt and spring thaw
 - Longer and more intense wildfire seasons
 - Longer freeze-free season
- Thawing permafrost has a profound, long lasting effects on the human-built and natural environments

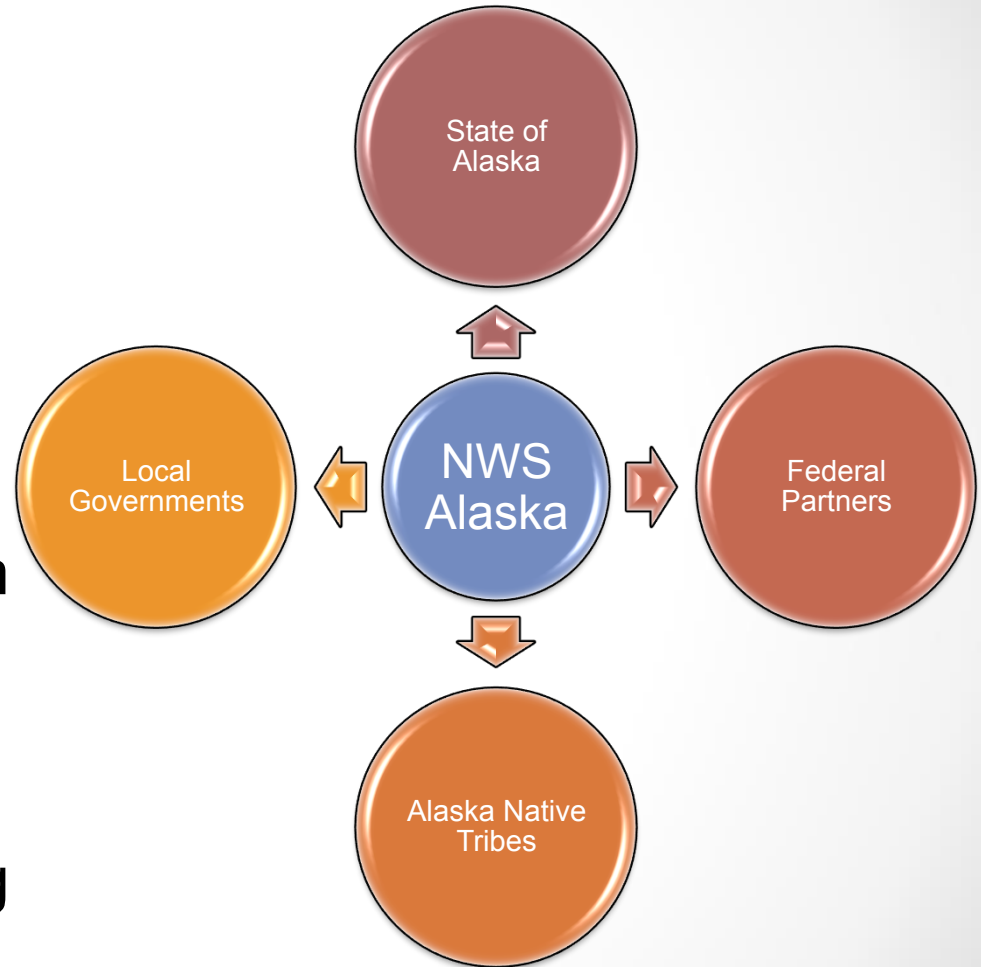


Photo 10: Shoreline erosion during coastal storm in Shismaref. (Credit: Tony Weyiouanna)

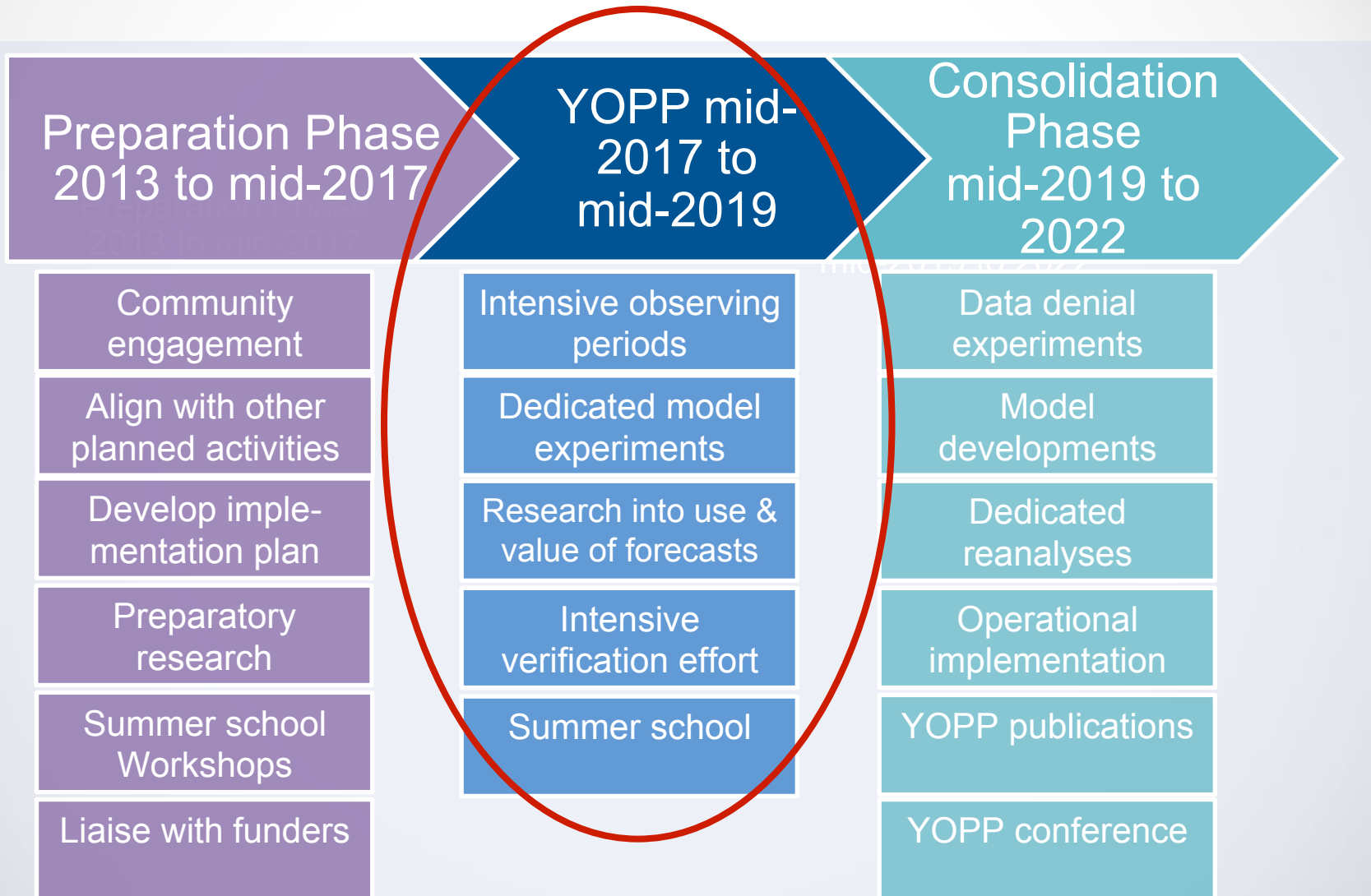


NOAA/NWS Alaska Region Impact-Based Decision Support Services

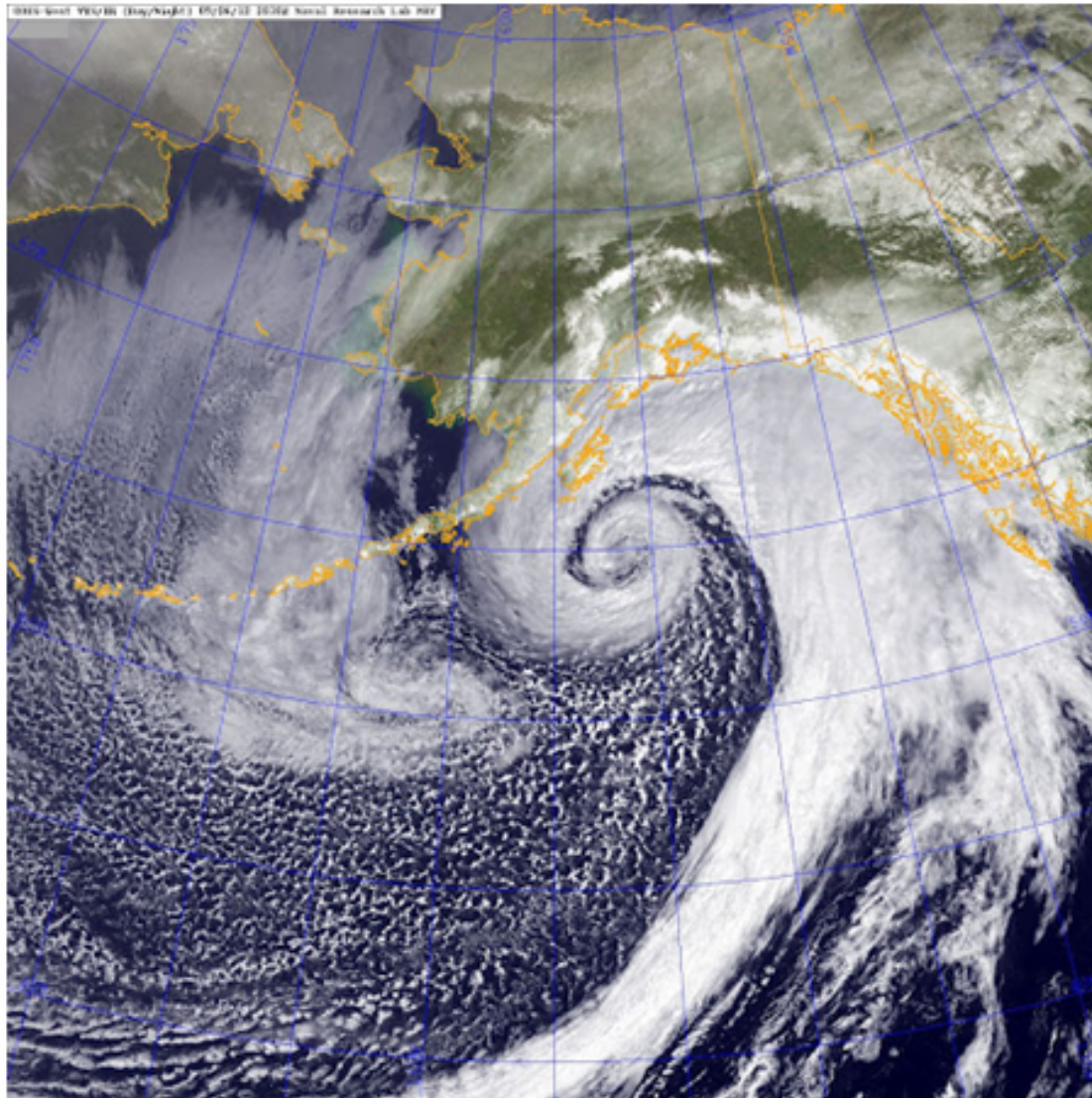
- Supporting governmental decision makers from the community and tribes to the Federal level
- The trusted source for weather, climate and ocean information
- Outlooks and forecasts from months ahead to weeks afterwards
- Partnering with academia and industry to move cutting edge science and technology into operations



WMO Polar Prediction Project (PPP) Year of Polar Prediction (YOPP)



Thank you!!!



Renee.L.Tatusko@noaa.gov

(907)271-3886