



Making Progress: Integrated Water Level Observation Network in Alaska

Alaska Ocean Observing System,
May 22-23, 2018

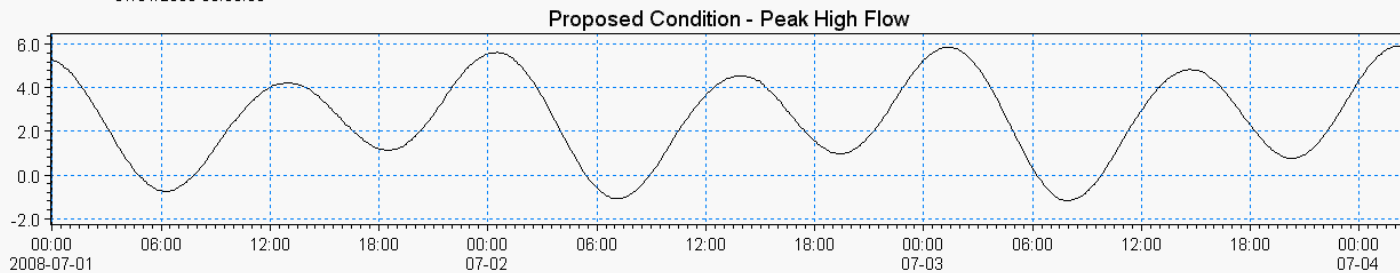
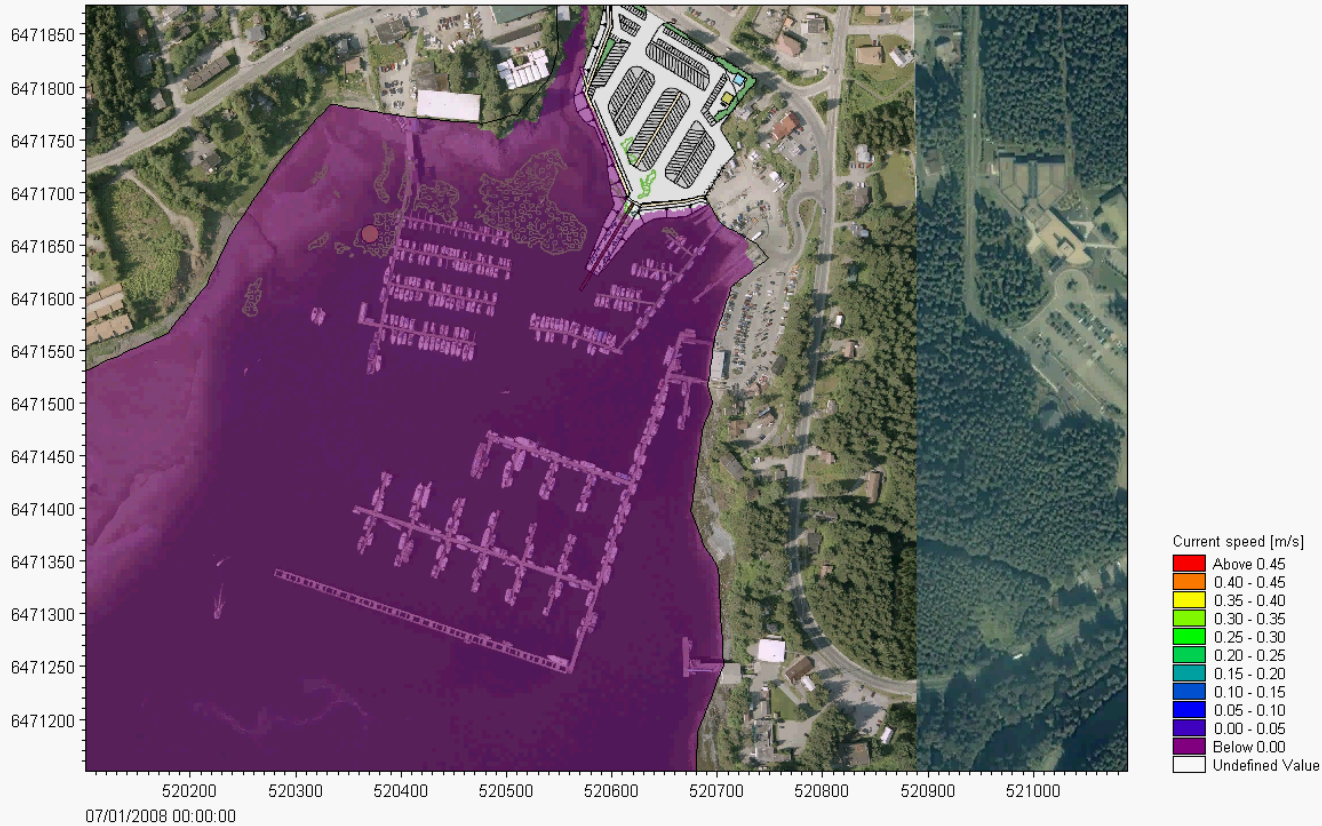




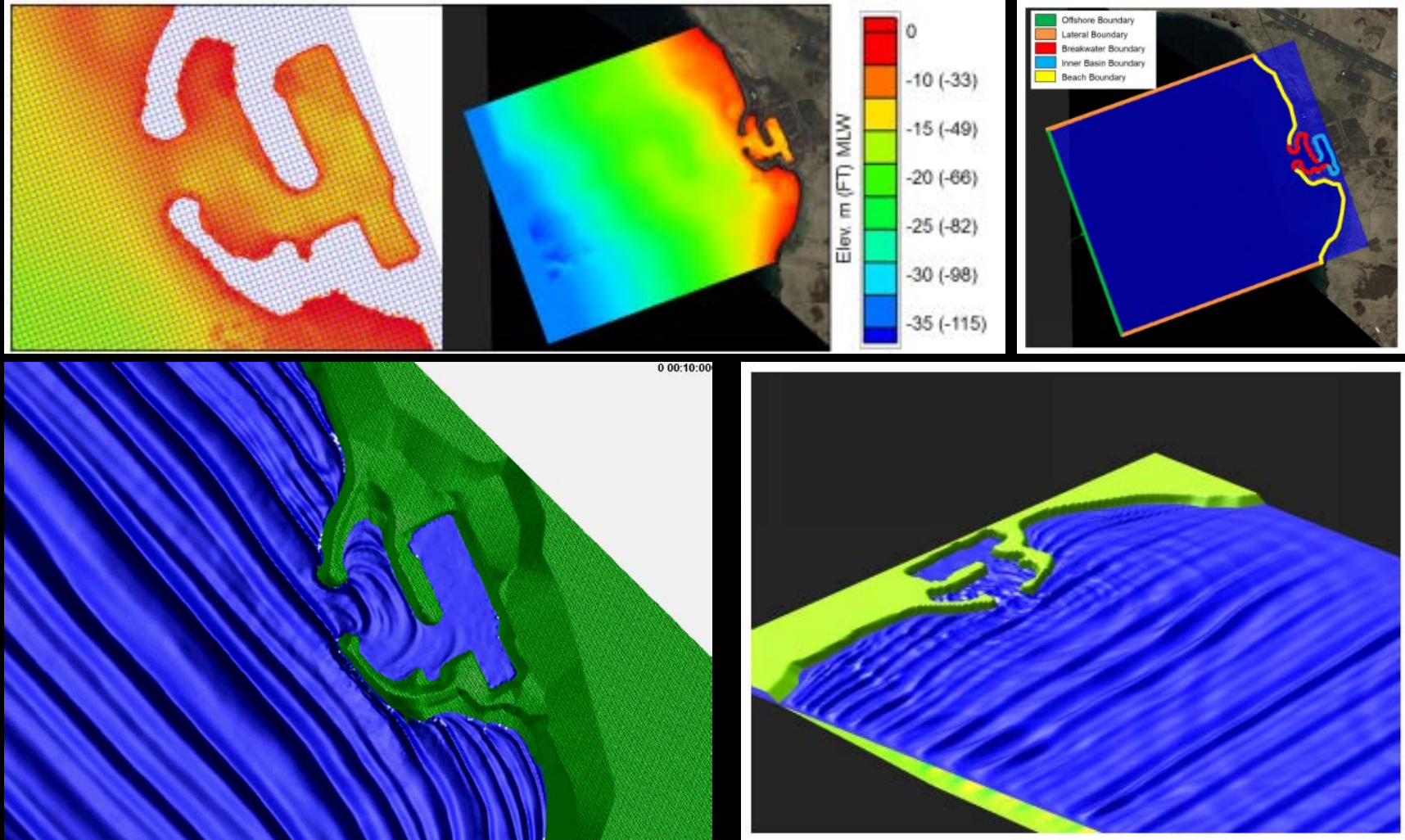
01 Typical Uses



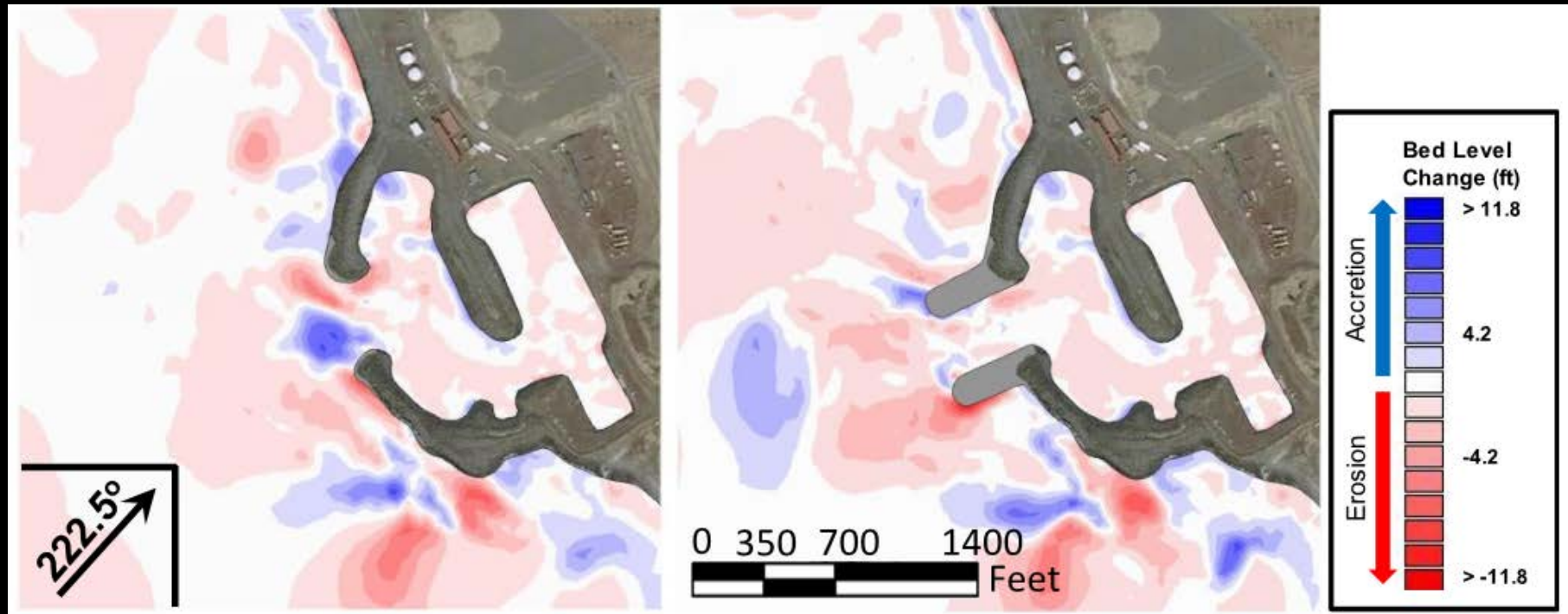
Numerical Modeling: Circulation/hydrodynamic Modeling



Numerical Modeling: Wave Modeling



Numerical Modeling: Sediment Transport



Existing Harbor

Harbor with Breakwater
Extensions

Other uses

- Basis of Design
 - Determining typical and design waves
 - Determining typical currents
 - Determining overtopping rates and runup
 - Determining erosion/scour potential
 - Determining storm surge potential/coastal flooding
- Design Features
 - Armor stone size
 - Harbor configurations
 - Habitat restoration
 - Environmental documents
 - Structure geometry
 - Dock design/location/orientation

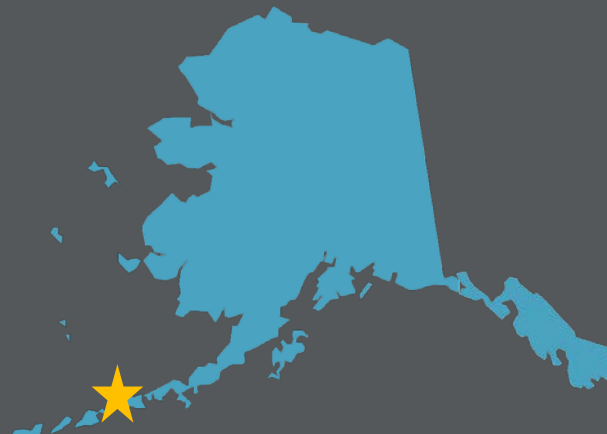




02 Example Projects



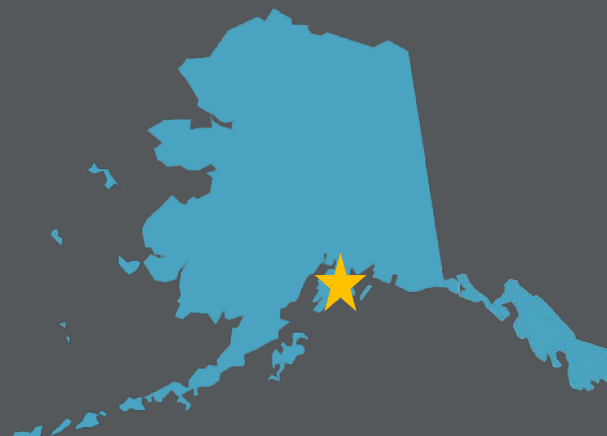
Harbor Improvements St. George, AK



Breakwater Design Nelson Lagoon, AK



Kodiak Runway Extension Kodiak, AK



Seward 75-90 Anchorage, AK



03 Products Used

Products Typically Used

- Tidal Datums (MHHW, MLLW, MSL, EWL, etc.)
 - Especially nice if tied to NAVD88 or NGVD29
- Water Level Data Time Series
 - 6 Min
 - High/Low
 - Monthly
- Predicted Water Levels
- Predicted Current Speeds
- Predicted sea-level change

- NOAA Tides and Currents
- USACE/NOAA Sea-Level Trends

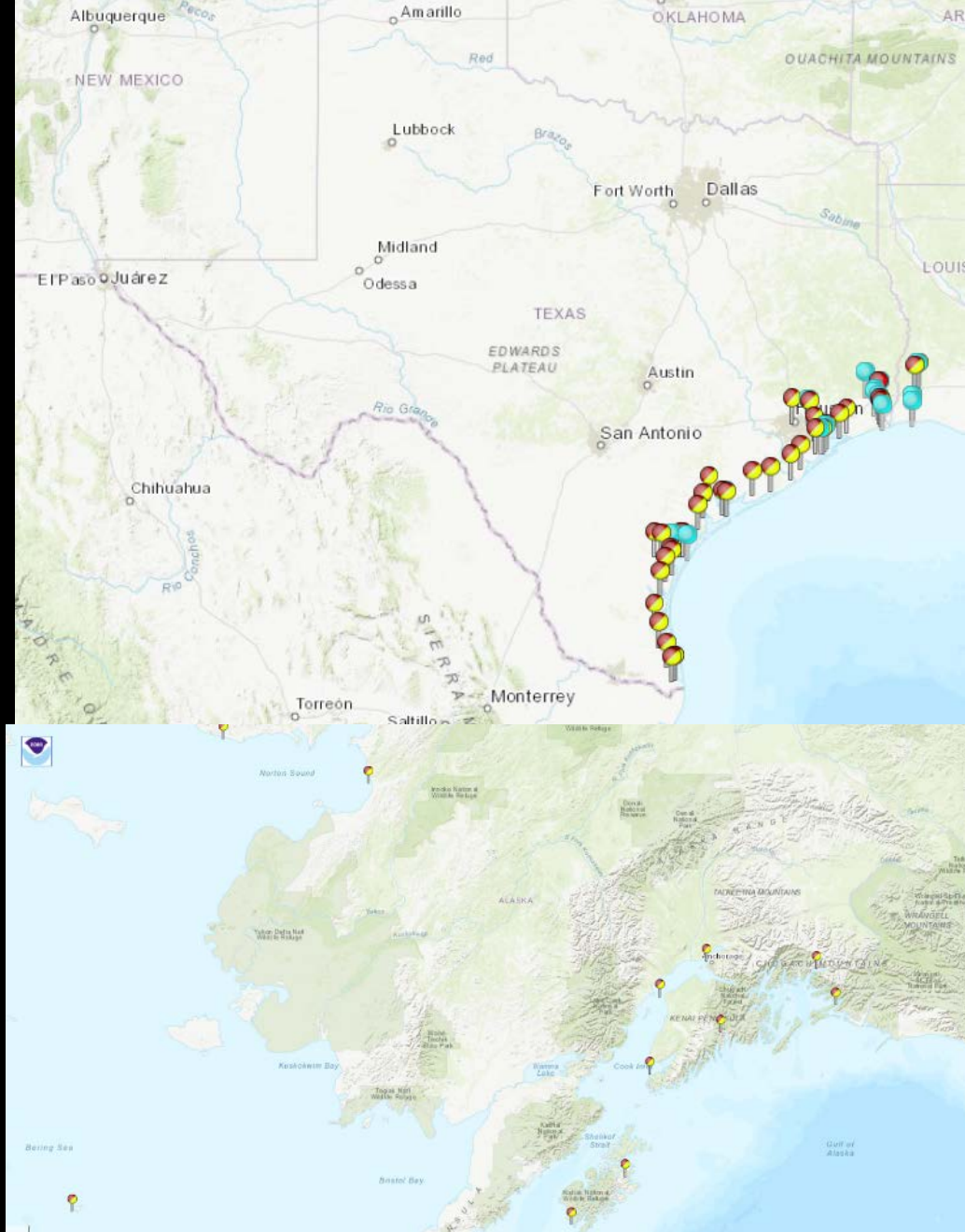




04 Geographic Gaps

Geographic Gaps

- Significant data gaps in AK compared to lower 48
- Need data at project location or nearby location with similar attributes
- Suggest short-term water level data acquisition to establish tidal datums at existing coastal communities.



Questions

Ronny McPherson, PE
Alaska Coastal & Maritime Lead, HDR
Anchorage, AK
Ronald.McPherson@hdrinc.com
907-644-2085

Ruth Carter, PE
Senior Coastal Engineer, HDR
Anchorage, AK
Ruth.Carter@hdrinc.com
907-644-2066